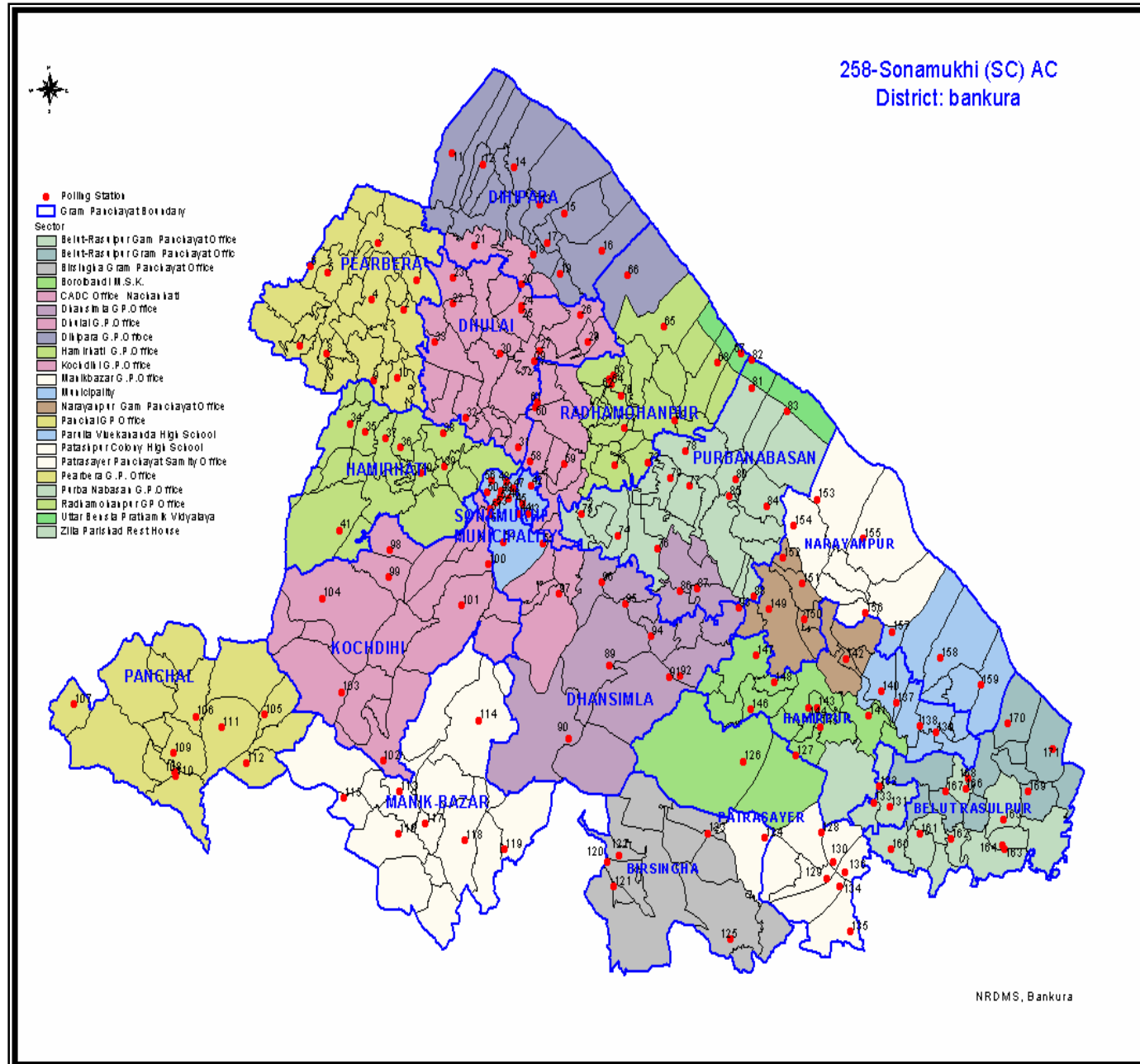


# BLOCK : SONAMUKHI

## Chapter-1: Name of the Block-Sonamukhi Dev. Block AC-Sonamukhi,258 (SC)AC



**Chapter-2:** Block profile (here present some basic information on the block including, but not restricted to the following:

- Location including latitude and longitude

Lati-23.300 N

Longi-87.840 E

- Area (in square kilometre)

378.85 Sq Km

- Administrative division (Name/s of Police Station/s, number and names of GPs, number of villages, number of Gram Sansads (the lattwo GP-wise and total)

Name of Police Station:-Sonamukhi Police Station.

**Address:-Sonamukhi,Bankura,Pin-722207 Phone No-30244-275240**

G. P. NAME	PH. NO.	Number of villages	Number of Gram Sansads
DIHIPARA	03244 - 277218		8
DHULAI	03244 - 277258		10
PEARBERA	03244 - 210803		9
HAMIRHATI	03244 - 260273		7
PANCHAL	03244 - 239236		8
MANIKBAZAR	03244 - 279105		6
KOCHDIHI	03244 - 275327		6
DHANSIMLA	03244 - 261231		7
RADHAMOHANPUR	03244 - 278147		13
PURBANABASAN	03244 - 273334		1

- Demographic details
  - Total population-1,42,328
  - Male -73,221
  - Female-69,107
  - SC (total and percentage)-59,717
  - ST (total and percentage)-5071
  - OBC (total and percentage)-
  - Minority (total and percentage)-
  - Gender ratio (number of female to 1000 male)-944
- Electoral data
  - Electors-1,23,218
  - Male-64, 958
  - Female-58260
  - Gender ratio-897
  - EPIC percentage-100%
  - PER percentage-

- Infrastructure details
  - Physical infrastructure
    - Length of roads (separately for each category-kachha, black-top, morrum, morrum-blulder, brick paved, concrete, others) (others should be specified)
    - Colleges-2
    - Schools and similar educational institutions
      - Higher Secondary-12
      - Secondary-3
      - Junior-14
      - Primary-155
      - MSK-6
      - SSK-25
      - Cluster Resource Centres- N/A
      - Any other institution-N/A
    - Hospitals and Health Centres
      - Rural Hospital-1
      - Block Primary Health Centre- N/A
      - Primary Health Centre-4
      - Sub-centre-26
      - ZP Dispensaries- N/A
      - GP dispensaries ( Homoeopathy-5/ Ayurvedic- N/A / Unani- N/A)
      - ICDS Centres-249
    - Banks and other financial institutions
      - Nationalized Banks-5(UBI,SBI,BDCC,Bank of India,Allahabad Bank)
      - Bank-wise branches-(UBI-6,SBI-2,BDCC-1,Bank of India-1,Allahabad Bank-1)
      - Regional Rural Banks-BGVB(3 Branches)
      - Other Banks, if any-N/A
      - Post Offices
        - Head Post Office, if any-Sonamukhi Post Office
        - Sub-Post Office
        - BranchPostOffice - (Dhipara, Dhulai, Pearbera, Hamirhati, Panchal, Manikbazar, Kochdihi, Dhansimla, Purbanabasan, Radhamohanpur)
      - Presence of Business Correspondents (if so, give the Customer Service Points)-N/A
- Human Resources
  - Posts and persons in position at the Block office, in Panchayat Samity, at each of the Gram Panchayats

**Staff Particulars of Sonamukhi Development Block (Bankura)**

Sl. No.	Name of Post	Sanctioned strength	Existing strength	Vacancy Position
<b>CD Staff</b>				
1	B.D.O.	1	1	-
2	Jt. B.D.O.	1	1	-
3	A.P.O.	1	1	-
4	S.A.E.	1	1	-
5	Accountant-cum-Head Clerk	1	1	-
6	Cashier-cum-Storekeeper	1	1	-
7	Accounts Clerk	1	1	-
8	Correspondence Clerk	1	1	-
9	Typist Clerk	1	1	-
10	Gram Sevika	2	1	1
11	Jeep Driver	1	-	1
12	Orderly to B.D.O.	1	1	-
13	Office Peon	1	1	-
14	Darwan-cum-Night Guard	1	1	-
<b>Panchayat Staff</b>				
1	P.D.O.	1	-	1
2	P.A.& A.O.	1	-	1
3	Panchayat Clerk	1	1	-
4	Panchayat Peon	1	1	-
<b>D.T.C.</b>				
1	Irrigation Clerk	1	1	-
2	Operator	19	6	13
3	W.T.A.	19	8	11
<b>Planning</b>				
1	S.A.E.	1	1	-
2	Typist Clerk	1	-	1
<b>R.W.P.</b>				
1	S.A.E.	1	1	-
2	Accounts Clerk	1	1	-
3	Typist Clerk	1	-	1
<b>R.LI.</b>				

1	O.C.M.	4	1	3
2	A.O.	4	3	1
3	Chowkidar	4	1	3
<b>I.D.O. Setup</b>				
1	I.D.O.	1	1	-
2	Orderly to I.D.O.	1	1	-
<b>M.W.I. Setup</b>				
1	M.W.I.	1	-	1
2	P.C.P.S.	1	-	1
<b>B.W.O. Setup</b>				
1	B.W.O.	1	-	1
<b>B.C.W. Setup</b>				
1	Ins. B.C.W.	1	-	1
2	S.W.	1	-	1

STAFF DETAILS OF SONAMUKHI PANCHAYAT SAMITY

Name of Post	Sanction Post	In position	Vacant
Block Informatics Officer	1	1	-
Education Officer	1	-	1
Dy. Secretary	1	1	-
UDA	1	1	-
Cashier-cum-Store Keeper	1	1	-
Data Entry Operator	1	1	-
Clerk-cum-Typist	1	1	-
Accounts Clerk	1	-	1
PS. Peon	1	1	-

STAFF PARTICULARS OF GRAM PANCHAYAT UNDER SONAMUKHI DEVELOPMENT BLOCK.

Total Name of the Post.	Total Sanctioned Post.	Total In position.	Total Vacant.
(1)	(2)	(3)	(4)
Executive Assistant.	10	9	1
Nirman Sahayak	10	10	-
Secretary.	10	10	-
Sahayak	20	18	2
Gram Panchayat Karmee.	25	13	12

- o Teachers in different categories of schools and colleges

**Sahayikas at SSK and Samprasarak/ Samprasarikas at MSKs**

Designation	Sanctioned post	Posted
<b>Sahayikas at SSK</b>	<b>50</b>	<b>46</b>
<b>Samprasarak/ Samprasarikas MSKs</b>	<b>36</b>	<b>30</b>

- o Health functionaries:-

Designation	Sanctioned post	Posted
Doctors	12	10
BPHN	1	1
PHN	1	1
Nurses	12	10
ANM	4	4
Other health staff	Sweeper-9 GDA-14	Sweeper-5 GDA-10

AWWs against total no. of ICDS centres-246